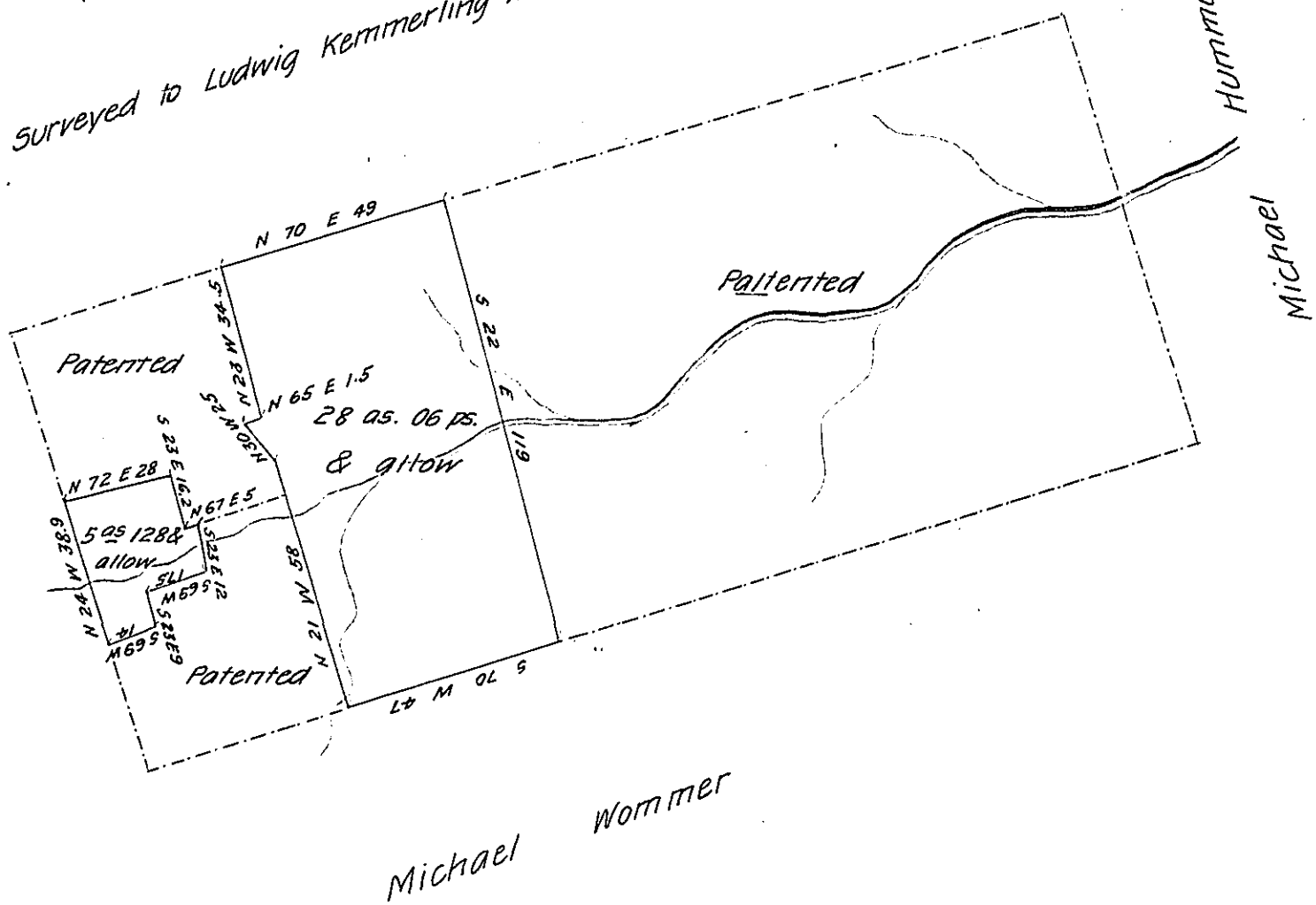


Surveyed to Ludwig Kemmerling Wt 23 March.

P. Gottmer by Wt 12 Jun 1751 or 1755



Draft of two tracts of land situated in Wayne Township in the County of Schuylkill containing together 33 acres 134 perches and the allowance of six per cent for roads &c. Surveyed for Michael Fritz, E. H. Paxson, Lewis Bedlerman, John Eiler and George Lukerbill on the 21th day of October A.D. 1870 being part of a larger tract of 209 acres 127 perches and allowance &c. Originally surveyed in pursuance of a Warrant granted to George Scheffler dated the 15th day of March A.D. 1750

Jo^s Huntzinger

To J. M. Campbell Esq.

C. Surveyor

Surveyor General

of Pennsylvania

IN TESTIMONY that the above is a copy of the original remaining on file in the Department of Internal Affairs of Pennsylvania, made conformably to an Act of Assembly approved the 16th day of February 1833, I have hereunto set my hand and caused the Seal of said Department to be affixed at Harrisburg, this twenty fourth day of April 1907

Laack Brown
 Secretary of Internal Affairs.